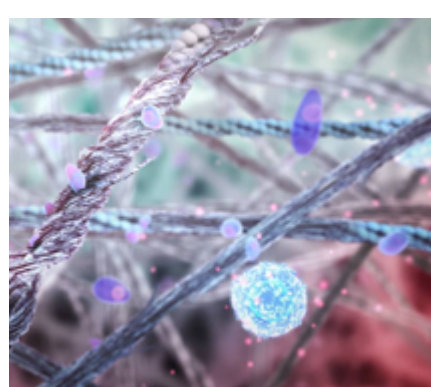


Collagen and Collagenase

High-Quality Products from Creative Enzymes

[Native Chicken Collagen Type II](#)

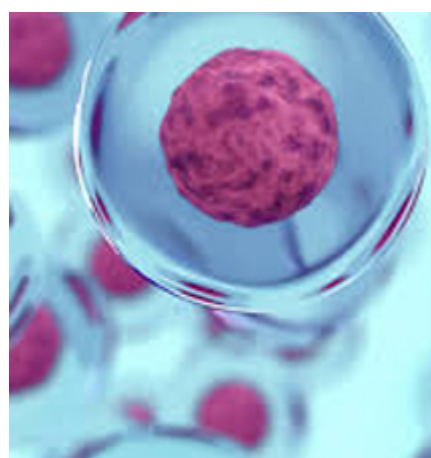


Description

Triplehelical domain of chicken sternum collagen type II. Gnd-HCl extraction, pepsin digestion, salt precipitation, ion exchange chromatography, gel-filtration. Native type II collagen has positive effects on the treatment of early rheumatoid arthritis.

Product Information	
Cat No. NATE-1165	Appearance: White or off-white powder
Source: Chicken sternum	Storage: Store in a clean, dry and ventilated area at room temperature.
Activity: Undenatured collagen > 26%	

[Collagenase AF-1 GMP Grade](#)

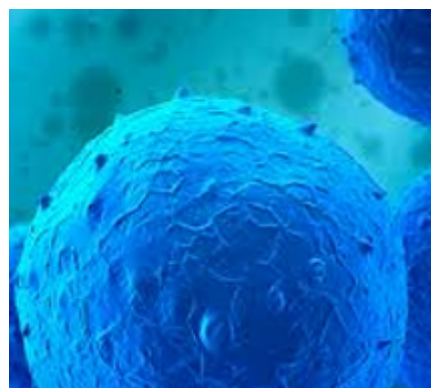


Description

Collagenase AF-1 GMP grade, often in combination with neutral protease AF GMP grade, is suitable for the digestion of several tissues, such as pancreas, liver and dental pulp. Using collagenase AF-1 to isolate the islets of Langerhans from human pancreas intended for the transplantation has been proved to be especially efficient.

Product Information	
Cat No. NATE-1919	Source: <i>Clostridium histolyticum</i>
Activity: ≥ 3.00 U/mg	Form: Lyophilized powder
Storage: 2 to 8 °C	Endotoxin Level: ≤ 10.0 EU/mg

[Collagenase/Neutral Protease Blend \(GMP Grade\)](#)



Description

Collagenase/neutral protease blend (GMP grade) is an avian and mammalian tissue-free collagenase and neutral protease enzyme blend produced under GMP quality conditions. The product is specifically designed for stem cell isolation from human and other adipose tissues.

Product Information	
Cat No. NATE-1917	Source: <i>Clostridium histolyticum/Bacillus polymyxa</i>
Appearance: White lyophilizate	Package: 1 vial, 35 mg
Stability: 48 months at -15 to -25° C	Endotoxin Level: < 50 EU/mg

Creative Enzymes provides many [collagen](#) and [collagenase](#) products for both research and industry use.